

***Maxillaria coniformis* Bennett & Christenson, sp. nov.** (Fig. 2)

Species haec Maxillaria trilobulata Bennett & Christenson (1995a: 197, f. 10) *similis sed magnifloribus, medilobo bullato, clinandrio fimbriato differt.*

Type:—PERU: Amazonas: Bongara, Venceremos Nuevo, 1700 m, 12 June 2005, *D. Bennett & A. Bennett 9159* (holotype: HAO).

Caespitose epiphytes. Pseudobulbs ovoid, 6×3.2 cm, subtended by a foliaceous bract subequal to the leaves. Leaves one, petiolate, oblong-elliptic, subacute, 24×4.5 cm. Inflorescences erect scapes 20–26 cm long, mostly concealed by tubular, acute, bracts, the floral bracts ovate, acute, concave, subequal to the ovaries. Flowers spidery, basal 1/3 dark purple, middle 1/3 cream colored, apical 1/3 purple, the labellum dark purple, the disc covered with cream colored farinaceous trichomes. Sepals linear-lanceolate, long-acuminate terminating in slender tails, the dorsal sepal 8×0.8 cm, the lateral sepals falcate, 8×1 cm. Petals subsimilar to the sepals, falcate, 6.2×0.6 cm. Labellum 3-lobed, 1.8×1.4 cm, the lateral lobes erect-incurved, the lower halves transversely elliptic, the apices obovate, broadly rounded, with undulate margins, the midlobe elliptic-ovate, obtuse-rounded, densely bullate, the callus oblong-ob lanceolate, obtuse-rounded, half the length of the labellum, flanked by a pair of slightly shorter calli half the width of the central callus. Column nearly straight, stout, 0.7×0.4 cm, the foot slightly shorter than the column, the clinandrium heavily fringed; the anther globose with a dorsal keel; the viscidium saddle-shaped; the pollinia 4 in two pairs, oblanceolate, obtuse-rounded, 1×1.2 mm. Flowering June and July following the rainy season.

Habitat:—Wet montane forest.

Distribution:—Peru.

Etymology:—Named for the remarkable awl-like, conic flower buds.

Observations:—Distinguished by the weak growth habit (based on experience in cultivation), the strongly conical buds, the 3-lobulate callus, the heavily fringed clinandrium, and the 3-lobed labellum with a densely bullate midlobe.

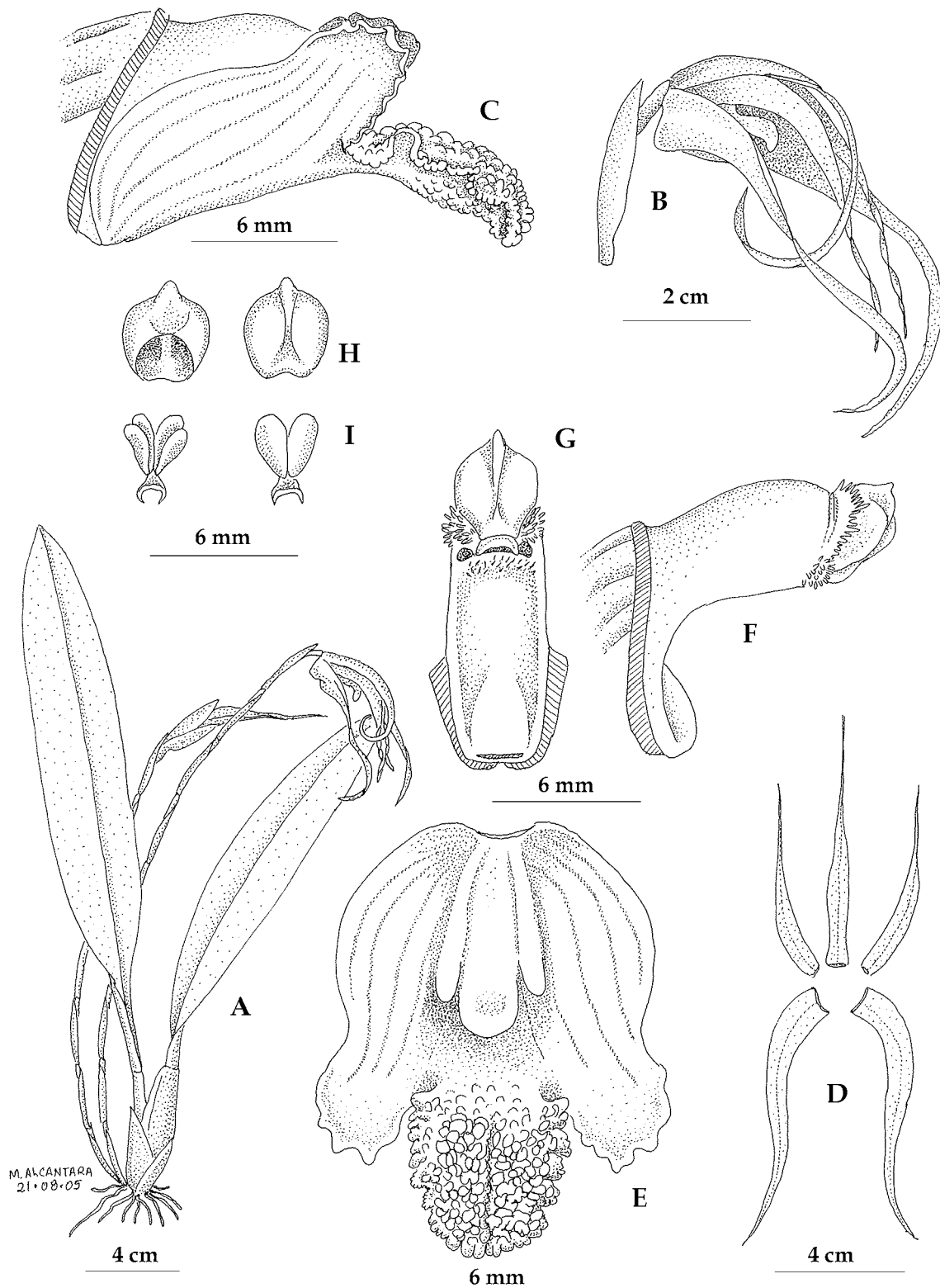


FIGURE 2. *Maxillaria conformis* Bennett & Christenson (drawn from *Bennett 9159* by M. Alcántara A.). **A.** plant in flower; **B.** flower, **C.** column and labellum, side view; **D.** sepals and petals, dissected; **E.** labellum, expanded, from above; **F.** column and foot, side view; **G.** column, undersurface; **H.** anther, ventral view (left), dorsal view (right); **I.** pollinarium, ventral view (left), dorsal view (right).